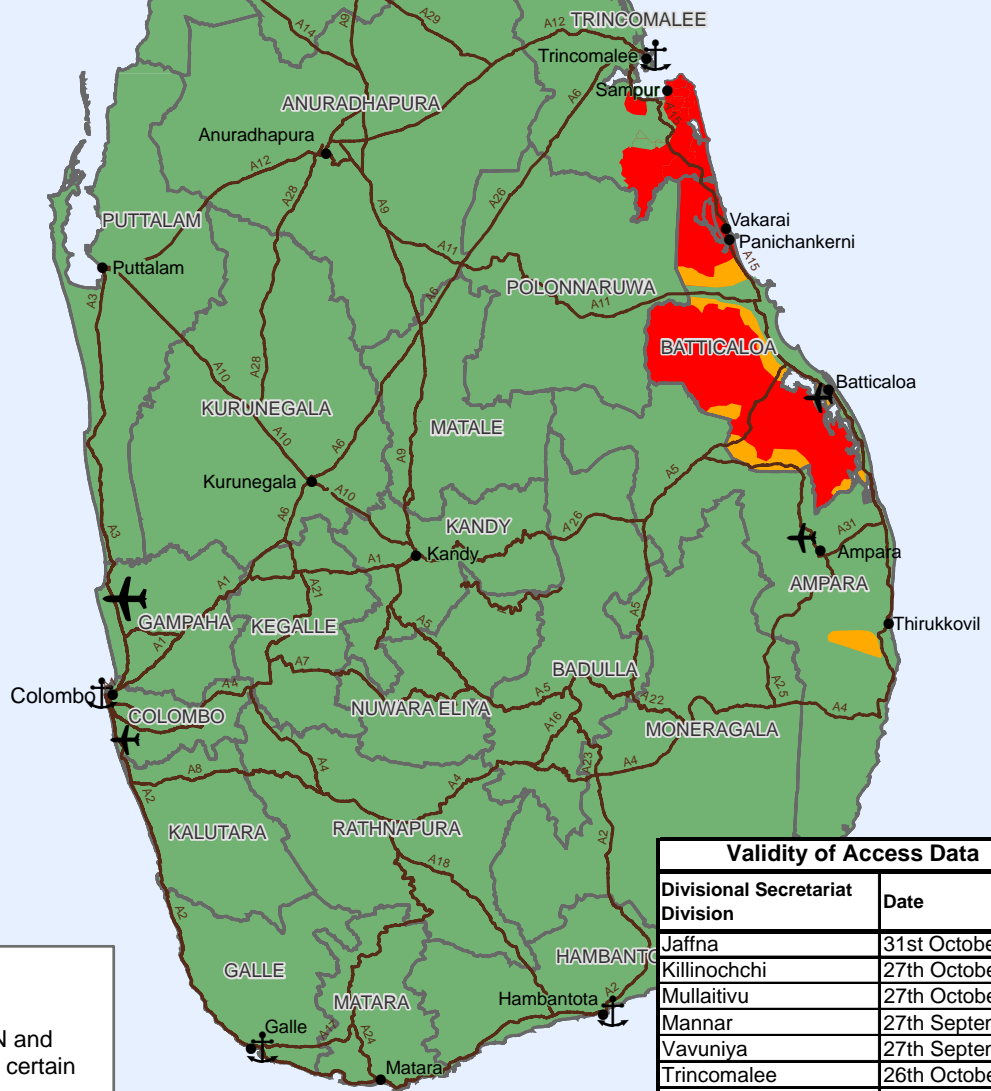
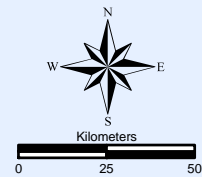
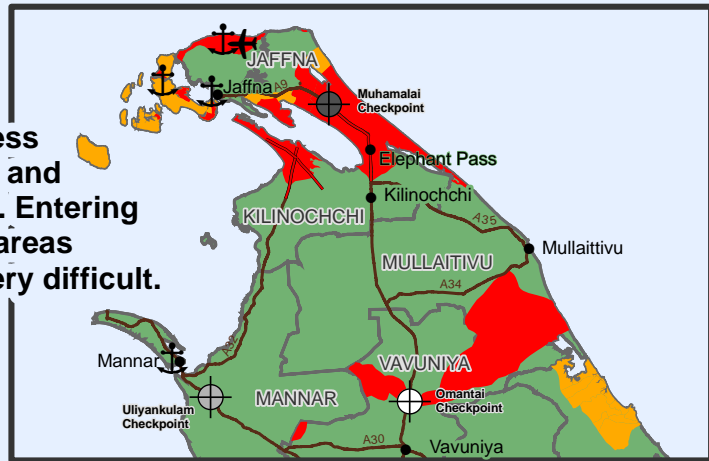


Status of access unpredictable and changes daily. Entering 'Full access' areas is currently very difficult.



Validity of Access Data	
Divisional Secretariat Division	Date
Jaffna	31st October
Kilinochchi	27th October
Mullaitivu	27th October
Mannar	27th September
Vavuniya	27th September
Trincomalee	26th October
Batticaloa	26th October
Ampara	26th October

Please note:

In areas of 'No Access', the UN and the ICRC were able to move in certain areas during certain periods.



Legend

- District Boundary
- Full Access
- Partial Access
- No Access
- Main Road
- Restricted Road
- Town
- FDL check point- closed.
- FDL check point- open for limited hours on Mondays and Fridays, mainly for government staff, UN and Civilians.
- FDL check point- open for UN, INGO and Civilians.
- Ports
- Domestic Airport
- International Airport

This map is based on the best current information provided to the United Nations by authorities.

Updated as at: 31-10-2006
 Produced on: 31-10-2006

Projection / Datum: Transverse Mercator Kandawala

GLIDE number: TS 2004-0001470LKA

Admin boundaries provided by: Survey Department, Govt. of Sri Lanka

MapNumber: OCHA/LK/Ampara/ACCESS/001/V9

This map is designed for printing on A4 size

The boundaries, names and the designations used on this map do not imply official endorsement or acceptance by the United Nations.

© 2006 UN Office for the Coordination of Humanitarian Affairs

202-204, Baudhaloka Mawatha, Colombo 7, Sri Lanka.
 Telephone +94 (11)2504434/5
 E-mail: ochasrilanka@un.org
 Website: http://www.humanitarianinfo.org/srilanka

Produced through the generous support of:

Canadian International Development Agency
 Agence canadienne de développement international